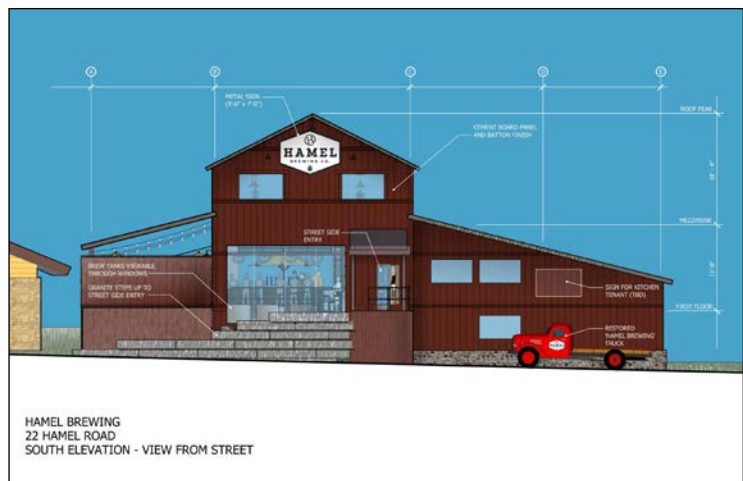


FOR IMMEDIATE RELEASE

Contact: Jody Elam-Foote
ATS&R Planners/Architects/Engineers
763.525.3209/F 763.525.3289
Email: jelamfoote@atsr.com

ATS&R Selected to Design New Microbrewery & Tap Room for Hamel Brewing Company

Minneapolis, MN – February 17, 2016— ATS&R Planners/Architects/Engineers was recently selected to design a new microbrewery and tap room for Hamel Brewing Company. The two-story, 5,316 square foot building will exhibit a barn-like appearance with the main level housing a bar and food service area. A second level mezzanine will provide additional seating for bar patrons with a deck to accommodate outdoor seating. The basement will house the microbrewery and storage for the bar. The microbrewery is scheduled to for bidding in late March 2016, with completion by the end of August 2016.



ATS&R's Executive Officer Dean Beeninga expresses, "We are excited to work with the Hamel Brewing Company on a building design that reflects the uptown Hamel history, while meeting the needs of a brewery and taproom establishment. Dominic Fragomeni and his partners at Hamel Brewing Company have been a pleasure to work with."

Founded in 1944, ATS&R specializes in innovative and collaborative facility design and offers comprehensive planning, architecture and engineering services. Our team provides quality and efficient professional services that revolve around integrity, fairness, and respect that enables the perpetuation of our firm...to serve as a model for others. With professional services including architecture, educational facility planning, mechanical engineering, electrical engineering, interior design, technology, site development, field administration, and total energy checkpoint, we collaborate to create designs that respond to our client's needs, mission, and values.